

PNEUMATIC PRESSURE GAUGING UNIT AND PNEUMATICS GAUGES OR AIR GAUGES

Range:

Pneumatics Plugs, Pneumatics Snap & Pneumatics Ring Gauges & Setting Rings.
Air Plugs: 2.00 mm to 200 mm
Air Rings: 4.00 mm to 100 mm



BASE CIRCLE DISC

Range: 15.00 to 250.00mm OD. These discs can be made as per customer drawing/requirements.

SPECIAL GAUGES

These gauges are manufactured as per customer drawing/requirements. **JE** specialises in manufacture of such gauges.

CARBIDE GAUGES

JE also manufactures plug and snap gauges in high quality tungsten carbide.

SUB- ZERO TREATMENT SERVICES

JE offers Sub- zero treatment at -85°C to +35°C

CALIBRATION SERVICES

Jayesh Enterprises, offers Calibration Services for internal and external Linear Measurement from 1.00 to 500.00mm in its laboratory. The laboratory is NABL accredited and has the latest instruments with Calibration Certificates traceable to NPL, New Delhi. Instruments installed in the lab are –

- TRIMOS Computer aided Horizontal Measuring Instrument Tulum-210 (0.0001 mm resolution and 0.2 +/- 0.2s repeatability)
- TRIMOS Computer aided Horizontal Measuring Instrument HPD500B (0.0001 mm resolution and 0.2 +/- 0.2s repeatability)
- Carl Zeiss Universal Horizontal Metroscope (0.001mm resolution)
- TRIMOS Computer aided Vertical Measuring Instrument – Range 600mm (0.001 resolution)

Scope of Calibration –

Vernier Calipers	Snap Gauges
Plunger and Lever Dial Gauges	Plain Pug Gauge
Height Gauges	Plate Plug Gauges
Feeler Gauges	Plain Ring Gauges
Micrometer Setting Pieces	Width Gauges
Micrometers	Measuring Pins
Setting Masters	Thread Measuring Wires
Taper Thread Gauges	Taper Gauges
Thread Plugs and Thread Rings	



ISO 9001 : 2008 Certified Company



Measuring Technology On The Right Track



SALIENT FEATURES OF JAYESH ENTERPRISES (JE) AND TIECO BRAND

- State of the art standard room
- Latest high resolution instruments
- Laboratory atmosphere maintained at 20 ± 1°C
- NABL certified laboratory
- An ISO 9001:2008 certified Company
- Highly qualified and experienced workforce
- Best alloy available is used as base material – OHNS and En31
- Product hardness maintained at 60±2 HRC
- All products sub-zero treated
- Products manufactured on highly accurate machines manufactured by renowned machine manufacturers.
- Customer service through “Customer Support Cell”
- Stringent Quality control – parameters maintained as per Indian standards.
- Design and manufacturing facility catering to custom built Special Gauges.
- Congenial working atmosphere
- Progressive management

Authorised Distributors:



Phone no: 011 22052796 /0931 28721 40

Web Site : www.holdwel.com

E-mail : contactus@holdwel.com

**ALL OUR GAUGE TOLERANCES FOR
PLUG GAUGES, RING GAUGES AND SNAP GAUGES ARE
AS PER IS 3455:1975 AND IS 919:1963.**



PLAIN PLUG GAUGES

Range: 0.30 to 1000 mm. From 1000 - 2000mm available on request.
0.30 - 10.00mm - Reversible Pin Type Plug
10.01 - 40.00mm - Taper Lock Design IS 6137:1987
40.01 - 100.00mm - Disc Double Ended IS 6244:1980
100.01 - 300.00mm - Plate Type Plug S/E GO & NOGO - Separate - **JE** Design
Above 300.01mm - Progressive Type - **JE** Design

MEASURING PINS AND PIN SETS

Range: 0.10 to 25.00 mm in steps of 0.01, 0.002 or 0.05mm
Loose pins of any size in the above range are available on request.
Specifications: IS 11103:1987

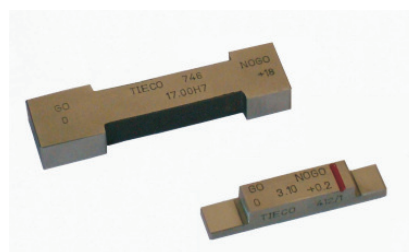


THREAD MEASURING WIRES

Range: 0.17 to 3.20 mm - 16 sizes, 0.17 to 6.35mm - 21 sizes
The above wires can be supplied in sets of two or three wires.
Odd size wires in inches or millimetres can also be supplied either in sets of two or three wires.
The standard set consists of following 16 or 21 sizes in millimetres.
Specification: IS 6311:1978

PLAIN AND ADJUSTABLE SNAP GAUGES

Range: 2.50 to 100.00 mm. Above 100mm available on request.
Available in 2 Types - Single & Double Ended. Also manufactured as per customer drawing/requirement.
Specifications: Single ended as per IS 8023:1991 and Double Ended as per IS 4583:1968.



KEY WAY WIDTH GAUGES

Range: 1.00 to 100 mm
Specifications: As per **JE** design and standards or as per customer drawings/requirements.

PLAIN RING GAUGES - GO & NOGO RINGS

Range: 1.00 to 550.00mm
Specification: As per IS3485:1983. Above 315mm as per **JE** Design



MASTER SETTING RINGS

Range: 1.00 to 550.00mm
Specifications: As per IS 3485:1983. Above 315mm as per **JE** Design



PLAIN SETTING MASTERS

Range: 1.00 mm to 300.00mm. Above 300mm available on request.
Specification: As per IS 4349:1987

TAPER GAUGE

Range :

1) ISO TAPER PLUGS & RINGS

Range: ISO 30, ISO 40, ISO 45 and ISO 50
Specifications: IS 9475:1986

2) MORSE TAPER PLUGS & RINGS

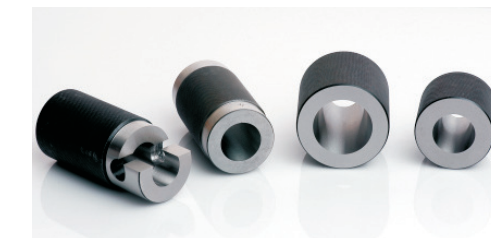
Range: MT 0 to MT 6
Available with or without Tang
Specifications: IS 2251:1986

3) JACOB TAPER GAUGES (PLUGS AND RINGS)

Range: JT0, JT1, JT2, JT3, JT6, JT(4), JT(5), JT33, JT2 (short)
Specifications: As per IS 10649:1983

4) TAPER PLUGS AND RINGS

Range: A 2 3, A 2 4, A 2 5, A 2 6, A 2 8, A2 11
Specifications: IS 2582:1972



THREAD GAUGES

Range - ISO metric, Unified, Taper (Formally NPT and BSPT), BSW-BSF, B.S. Cycle, B.A. screw and G series (Formally BSPF) thread gauges.
Thread gauges are available in both plugs (from diameter 1.60mm - 200.00mm) and ring types (from diameter 2.00mm - 200.00mm)
Specifications: The thread gauges are made in accordance with national and international standards such as ANSI, BS, IS, etc



SLIP GAUGES OR GAUGE BLOCKS (LOOSE)

Range: 1.00 to 300.00 mm
Specifications: IS 2984- 2003 - Workshop grade

